

Reception Parents' Meeting

Tuesday 14th June 2022



Aiming High ~ Reaching Higher

Welcome

- Welcome from the Headteacher
- Hilderthorpe 100
- Journey through Hilderthorpe
- Early Years Foundation Stage
- About Hilderthorpe Reception
- Reception Baseline Assessment
- Tapestry
- Uniform
- Starting Arrangements
- Further Information
- Questions
- Tour of EYFS



Welcome to Hilderthorpe Primary School

Our Vision

Our vision at Hilderthorpe Primary School is to provide opportunities for children to develop as independent, confident, successful learners with high aspirations who know how to make a positive contribution to their community and wider society. There is a high focus on developing moral, spiritual, social and cultural understanding. Mental health and well-being is at the heart of our curriculum with the theme of "Nurture" being threaded through our curriculum.



Senior Leadership Team

Mrs S Hall	Headteacher • Deputy Designated Safeguarding Lead
Mrs J Grant	Deputy Headteacher • Upper Key Stage 2 Lead
Ms R Lees	Assistant Headteacher • EYFS Lead
Miss S Wadsworth	Assistant Headteacher • Lower Key Stage 2 Lead
Mrs J Hoggarth	SENDCo • Key Stage 1 Lead
Mrs J Brown	Designated Safeguarding Lead • Attendance Lead



**Hilderthorpe
Primary School**

Aiming high, reaching higher



Hilderthorpe 100 Passport

Aiming high, reaching higher



Hilderthorpe 100 Passport

Our vision at Hilderthorpe Primary School is to provide opportunities for children to develop as independent, confident, successful learners with high aspirations who know how to make a positive contribution to their community and wider society.

This Hilderthorpe 100 Passport provides an overview of the enriching experiences we promise to provide each child during their curriculum journey with us. We look forward to creating many happy memories together!



WHOLE SCHOOL

EYFS

KS1

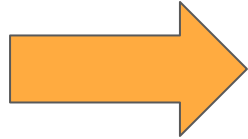
LKS2

UKS2

Your Child's Journey through Hilderthorpe

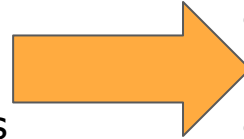
Reception

- Become settled at Primary School
- School Trips
- Outdoor learning
- Baseline assessments (more information coming!)



KS 1

- Christmas play
- Y1 Phonics screening
- School Trips

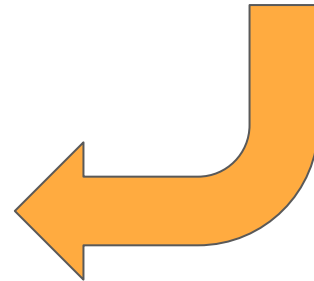


LKS2

- Easter play
- Y4 multiplications check
- Working with industry

UKS2

- Opportunity to attend overnight residentials
- Y6 production
- Y6 SATs



Early Years Foundation Stage (EYFS)

How we learn in Reception

At Hilderthorpe Primary School, we follow the Early Years Foundation Stage (EYFS) Profile which is based around a document called Development Matters. This document tracks children from birth until the end of their Reception Year and it is used nationally across all Early Years settings.



Reception Baseline Assessment (RBA)

In September 2017 the DfE announced that a new assessment in Reception would be introduced as a baseline to track pupils' progress during primary school.

The focus of the RBA will be on communication, language and literacy, and maths. It will take around 15 minutes, covering literacy, language, communication and early maths. Teachers will administer the assessment and record their results electronically.

The RBA data will be used to judge how much progress children have made by the end of KS2 (Year 6 SATs). There will be no "pass" or "fail" or numerical score, and the results of the RBA will not be used to track individual pupils.

The RBA will be interactive and practical, and the DfE suggests that "in most cases pupils should not be aware that they are being assessed". Children will be asked to answer questions verbally or by pointing at or moving objects. If children need a break during the assessment, the teacher will be able to pause at any time.

About Hilderthorpe Reception



Teacher - Mrs L Harding

Support - Miss G Wardill, Miss A Baron, Mrs L McGregor



Teachers - Ms R Lees & Miss S Wadsworth

Support - Miss R Ball, Miss JL McKenzie

About Hilderthorpe Reception

- Classroom doors open at 8:40am and will close at 8:50am - please enter from the EYFS playground
- Pick up is at 3:15pm from the EYFS playground
- Pre-booked Breakfast Club is available from 8:00am in the school hall
- Attendance is very important. We aim for 97%
- Lunchtime - packed lunches or school dinners (free to children from R - Y2)
- Child-centered approach to learning

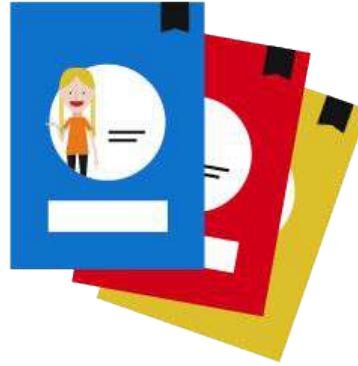


About Hilderthorpe Reception



- We teach sounds;
- Children practise reading and spelling words containing these sounds;
- We give children decodable books containing sounds and words they can read;
- They read each Storybook three times at school and again with you at home;
- On each reading, children's fluency increases and the more they can focus on what the story is about;
- Children also learn to spell the words they have been reading and develop their ideas into sentences.

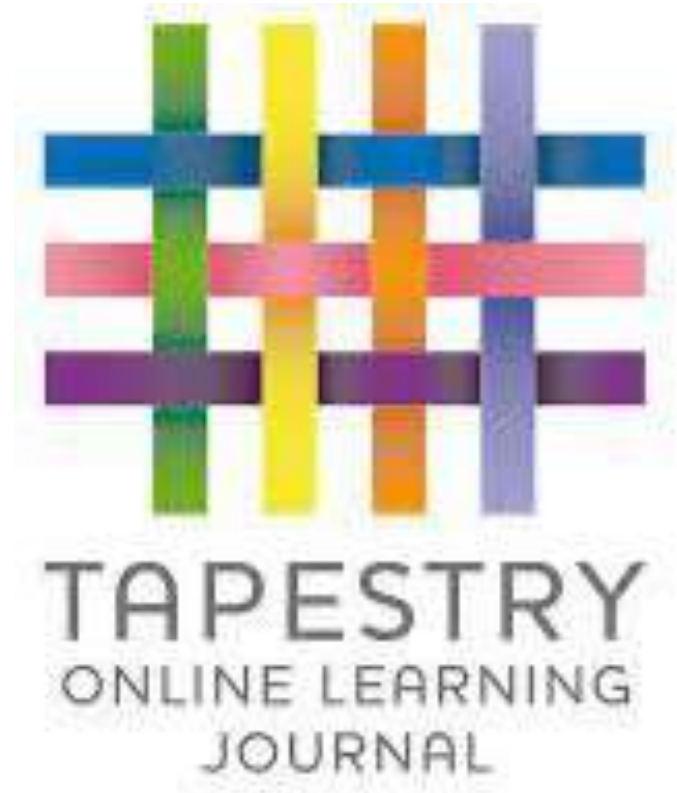
About Hilderthorpe Reception



- Encourages learning through play;
- Helps children to develop a deep understanding of the world of mathematics;
- Includes workbooks and picture books - all beautifully designed to help children learn;
- Mastering Number will help children develop good number sense.

Observations and Assessment

- Tapestry builds a very special record of a child's experiences, development and learning journey through their early years and primary education.
- Using photos, videos and diary entries, a teacher or early years educator, along with the child's parents or carers 'weaves' the story of the child and how they are growing and developing.
- The Tapestry platform then works seamlessly to enable these memories to be kept as a permanent record of each child's unique journey.
- All information is stored securely.



Uniform

- A blue sweatshirt or cardigan (with or without the school logo)
- Grey or black trousers or shorts
- Grey or black skirt or pinafore dress
- Blue check dress
- Black flat shoes
- White or pale blue polo shirt

PE kit

- School PE top or white t-shirt
 - Black or navy shorts or tracksuit bottoms
 - School hoodie or dark hoodie
 - Trainers or plimsolls
-
- We ask that long hair is tied back
 - Earring studs are acceptable but must be removed for PE
 - No other jewellery (a watch is acceptable but not for PE)

All items can be purchased from K&A Sales.



Starting Arrangements: Stay & Play

Friday 8th July 2022

We would love your child to attend a 'Stay and Play' session on Friday 8th July.

You should have received a letter informing you of your child's class and session slot (please let us know if you haven't).

This is a brilliant opportunity for your child to meet their new teacher and other staff and familiarise themselves with their new environment.

We do ask that you leave any brothers or sisters with a relative or friend, so that we can make this a special occasion for your child.



Starting Arrangements: September Start

Phased Start in September

All children will start school on Tuesday 6th September 2022.

In order to help Reception children have a smooth transition into school life, for the first two days at school, all children will attend school for **half day sessions** (either in the morning or afternoon.) You should have received a letter letting you know which session to attend.

These two half day sessions to allow us to get to know your child in a smaller group and enable us to ensure they are comfortable in their surroundings. We will include a visit to hall where they will be eating their dinner on the Thursday. This time ensures we get to know your child really well from the start and give them valuable time in a small group with the adults working in their classroom.

Further Information

School Website: www.hilderthorpeprimaryschool.co.uk

Here you can find:

- Term dates
- School meals
- EYFS page
- Curriculum information
- Newsletters
- Much more!

Twitter: www.twitter.com/HilderthorpeSch

- You can also see our tweets direct on our website, so there is no need to have an account

**Do you have any
questions?**

Tour of EYFS



We'd love for you to have a look round our wonderful provision and have a chat to the staff.



Thank You for Coming!